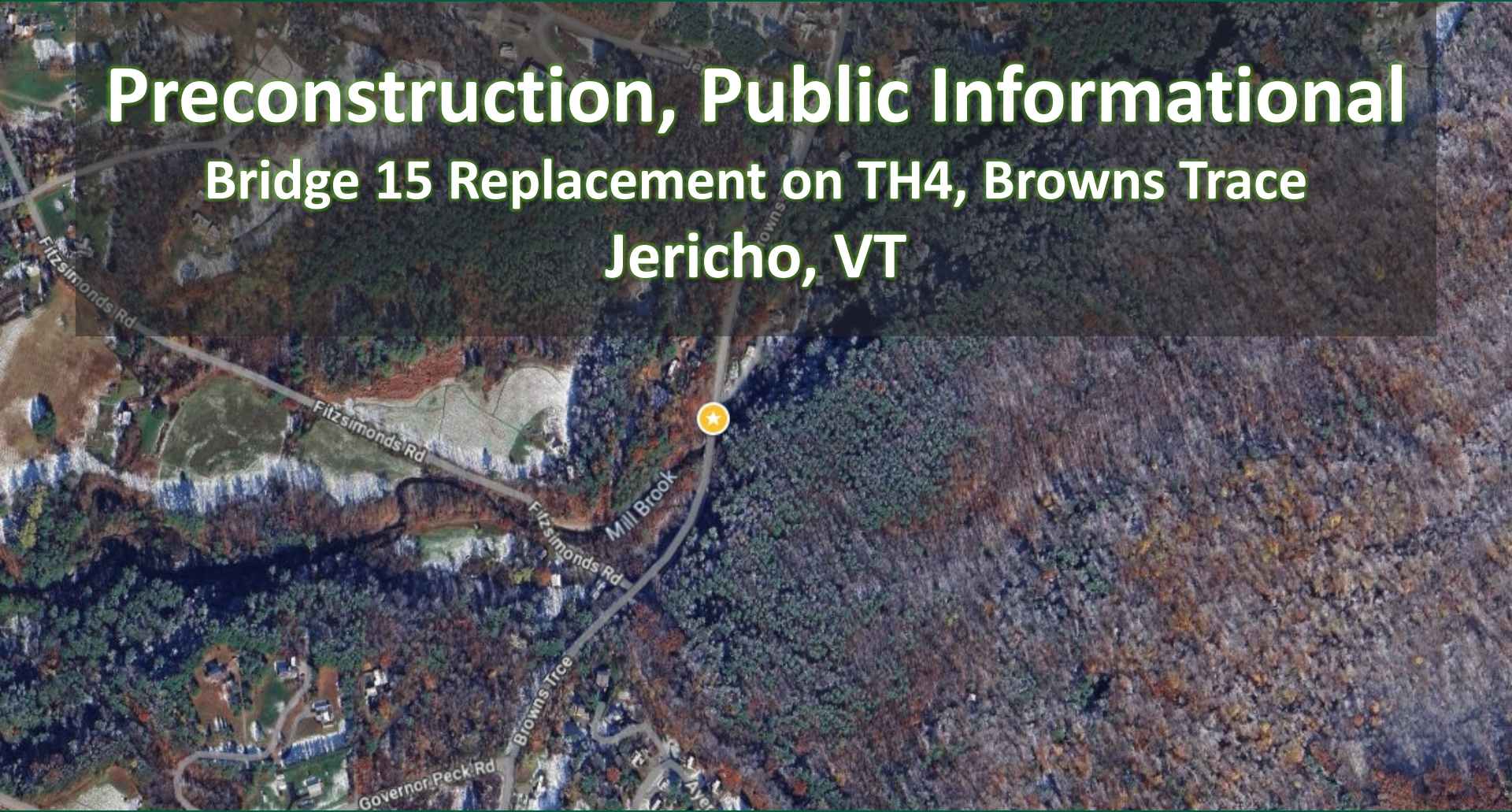


Preconstruction, Public Informational

Bridge 15 Replacement on TH4, Browns Trace Jericho, VT



Updated: April 2025



Informational By:

- Engineers Construction, Inc.
Contractor
- Julianne Tung
Resident Engineer – VTrans
- Rob Young, PE
Project Manager – VTrans
- Fianna Barrows, PE
Lead Design Engineer – VTrans
- Toni Pignatelli, AICP
Public Information Consultant– IMEG



Table of Contents

- Existing Bridge Condition
- Proposed Bridge Structure
- Methods of Construction
- Detour Route
- Construction Schedule and Work Hours
- Contract Information
- Questions and Comments

Bridge Site — Existing



Existing Bridge Information

- Originally constructed in 1927
 - Reconstructed 1962
 - Minor concrete repair, latest 2022
- Bridge is structurally deficient
- Narrow roadway approach width
- Existing hydraulic opening doesn't meet BFW of 40'
- Bridge Rating
 - Bridge Deck: 6 (Satisfactory)
 - Bridge Superstructure: 6 (Satisfactory)
 - Bridge Substructure: 6 (Satisfactory)
 - Channel and Channel Protection 5 (Fair)

Existing Bridge Deficiencies, Narrow Approach Width



Existing Bridge Deficiencies, Bridge rail deterioration



Existing Bridge Deficiencies, Beam spalling/ cracking



Existing Bridge Deficiencies, Beam spalling/ cracking



Existing Bridge Deficiencies, Wingwalls deteriorating and narrow hydraulic opening



Existing Bridge Deficiencies, Abutment spalling/ cracking



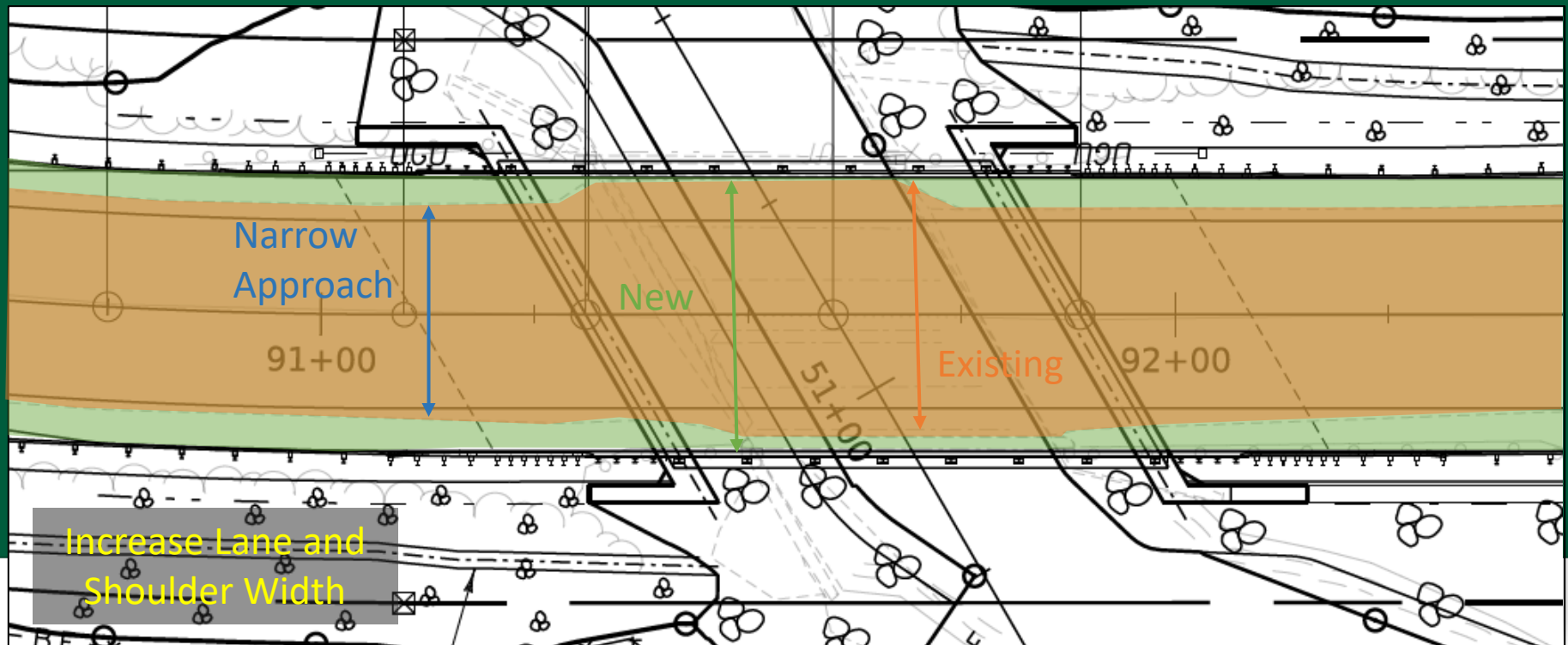
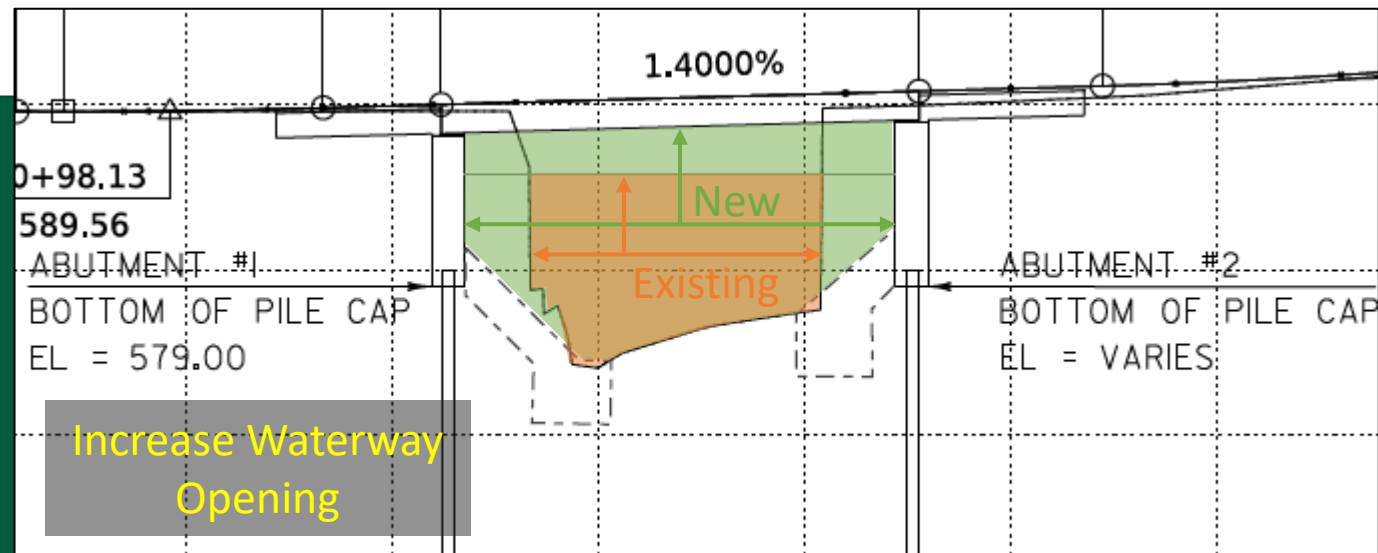
Existing Bridge Deficiencies, Abutment 2 scour



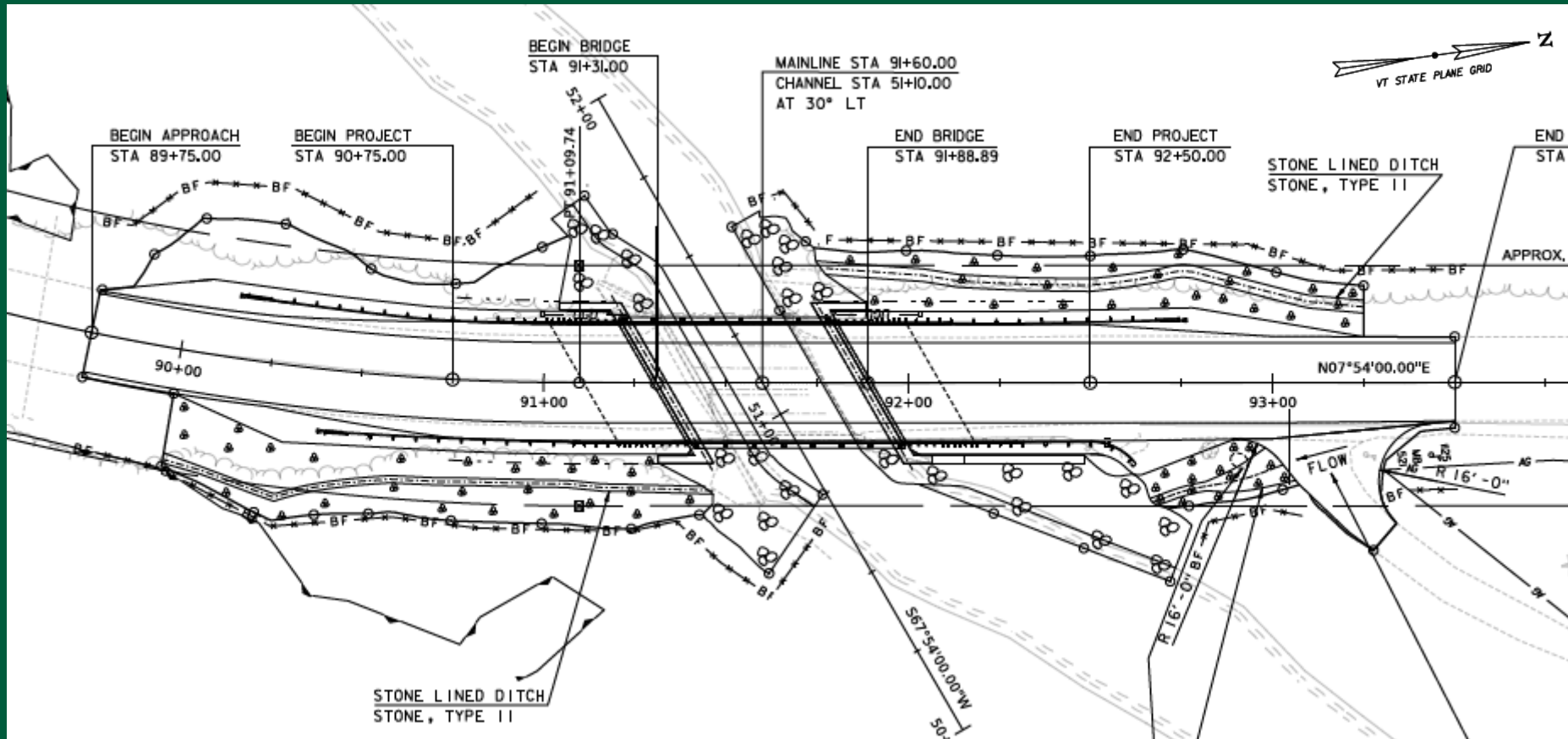
Proposed Bridge

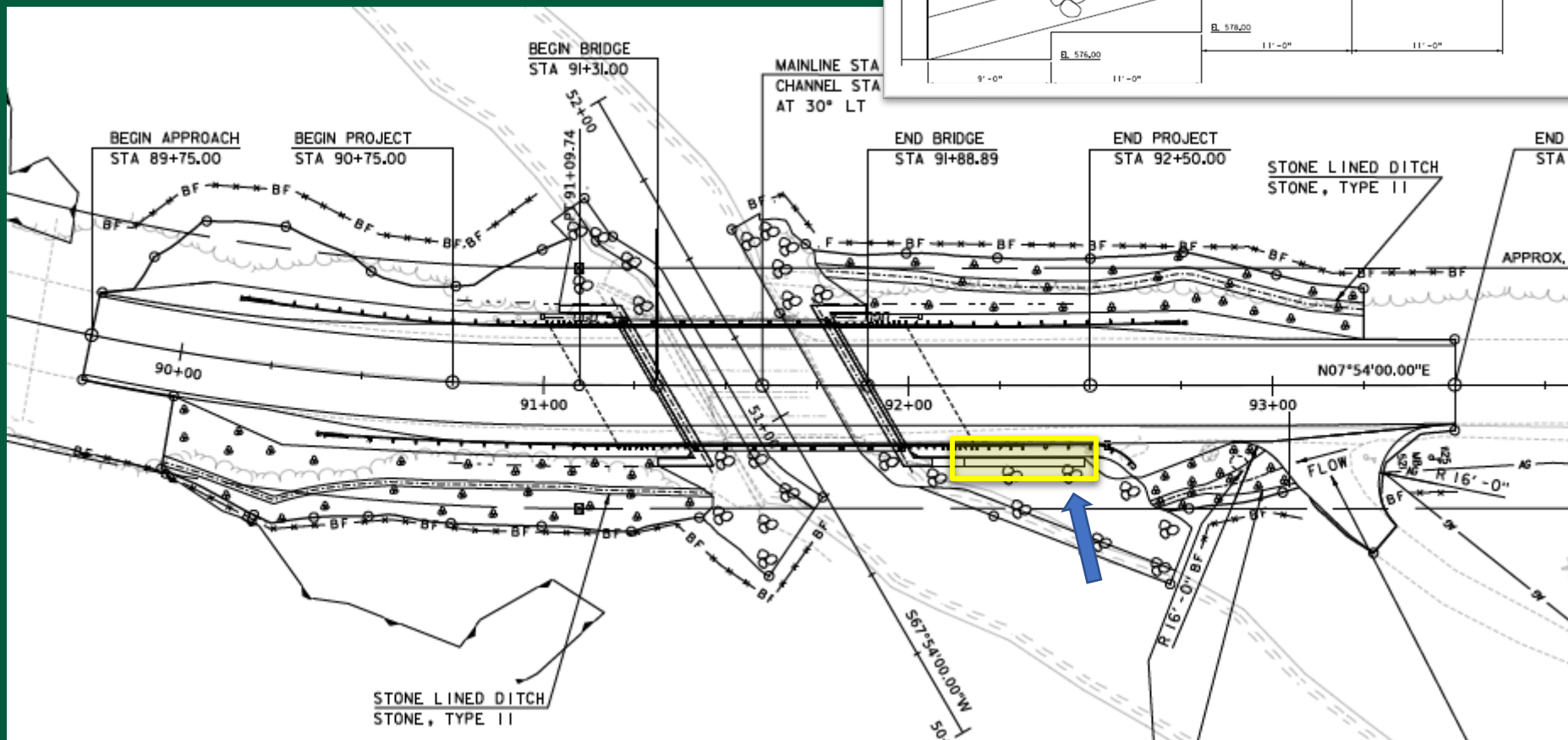
- Increased Span (38' to 55' along roadway)
- Increase Approach and Bridge Width, Lane and Shoulders
- Precast/ prestressed concrete solid slabs
- Pinned-Integral abutments on piles (deep foundation)
- Construct Retaining Wall

Proposed Bridge



Alignment





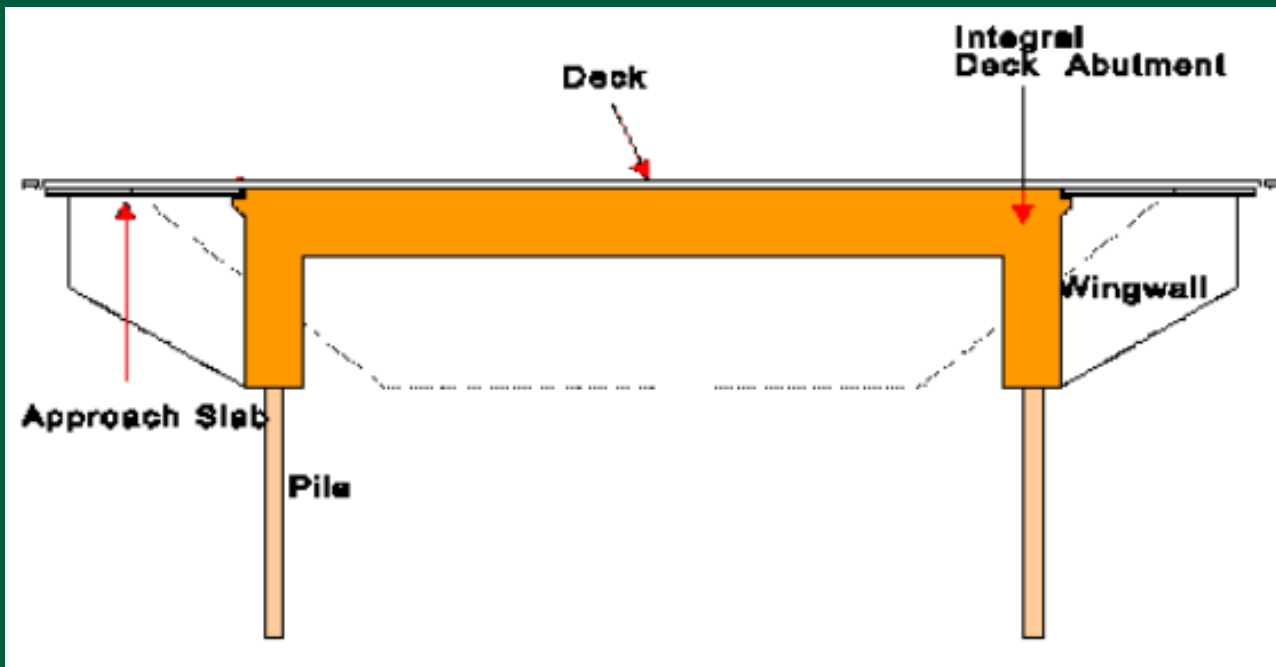
Superstructure

Precast Solid Slabs/
Rapid setting concrete joints



Foundation

Deep piles and Integral abutments



Methods of Construction

Combination of Accelerated Bridge Construction and Conventional Construction.

- **Overall Goals:**
 - Implement Accelerated and Conventional Components Efficiently
 - Maximum Closure Duration of 45 days
- **Accelerated Elements (where feasible)**
 - Precast/ Prestressed Deck Slabs
 - Rapid Setting Concrete
- **Conventional Components (due to site complexity)**
 - Cast-in-place abutments and approach slabs

Final Bridge Will Look Similar To:



Detour (by Town of Jericho)



Project Process

Project Funded

Project Defined

Contract
Awarded
Dec 2024

Construction
Summer 2025

Financial Incentives and Disincentives included in Contract to encourage early completion

Anticipated Construction Schedule

June 16th

- Begin Pre-Closure Work on Site

July 7th

- Anticipated Bridge Closure

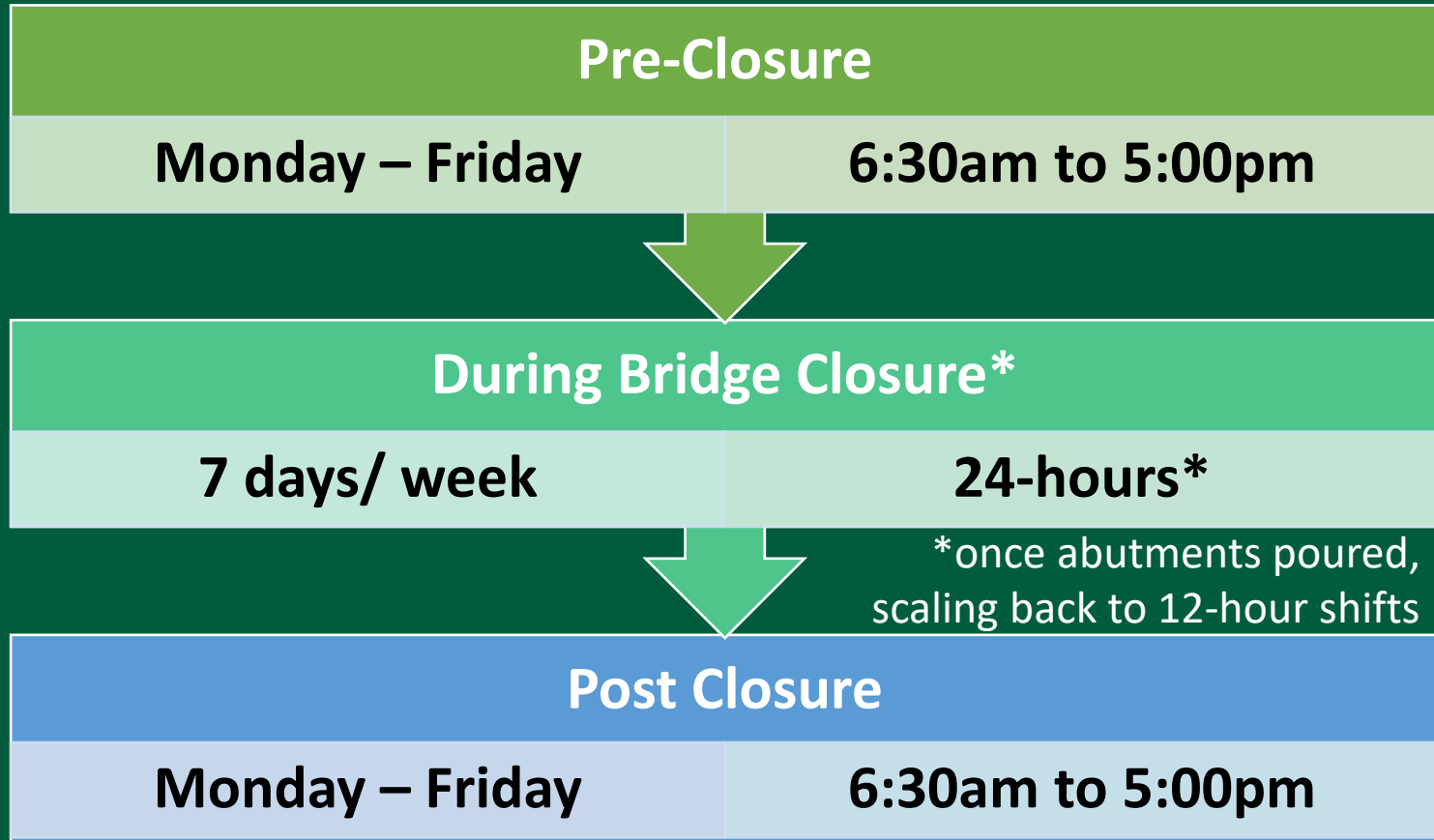
August 20th

- Anticipated Bridge Opening

September 10th

- Project Completion

Contractor Planned Work Hours





Public Outreach – Contact Information

Public Information Consultant – **Toni Pignatelli**

To Sign up for emails with project updates – send an email to:
Toni.m.Pignatelli@imegcorp.com

Toni's Contact information

Direct Phone #: (860)-321-9017

Email: Toni.m.Pignatelli@imegcorp.com



Questions and Comments?

